
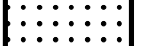

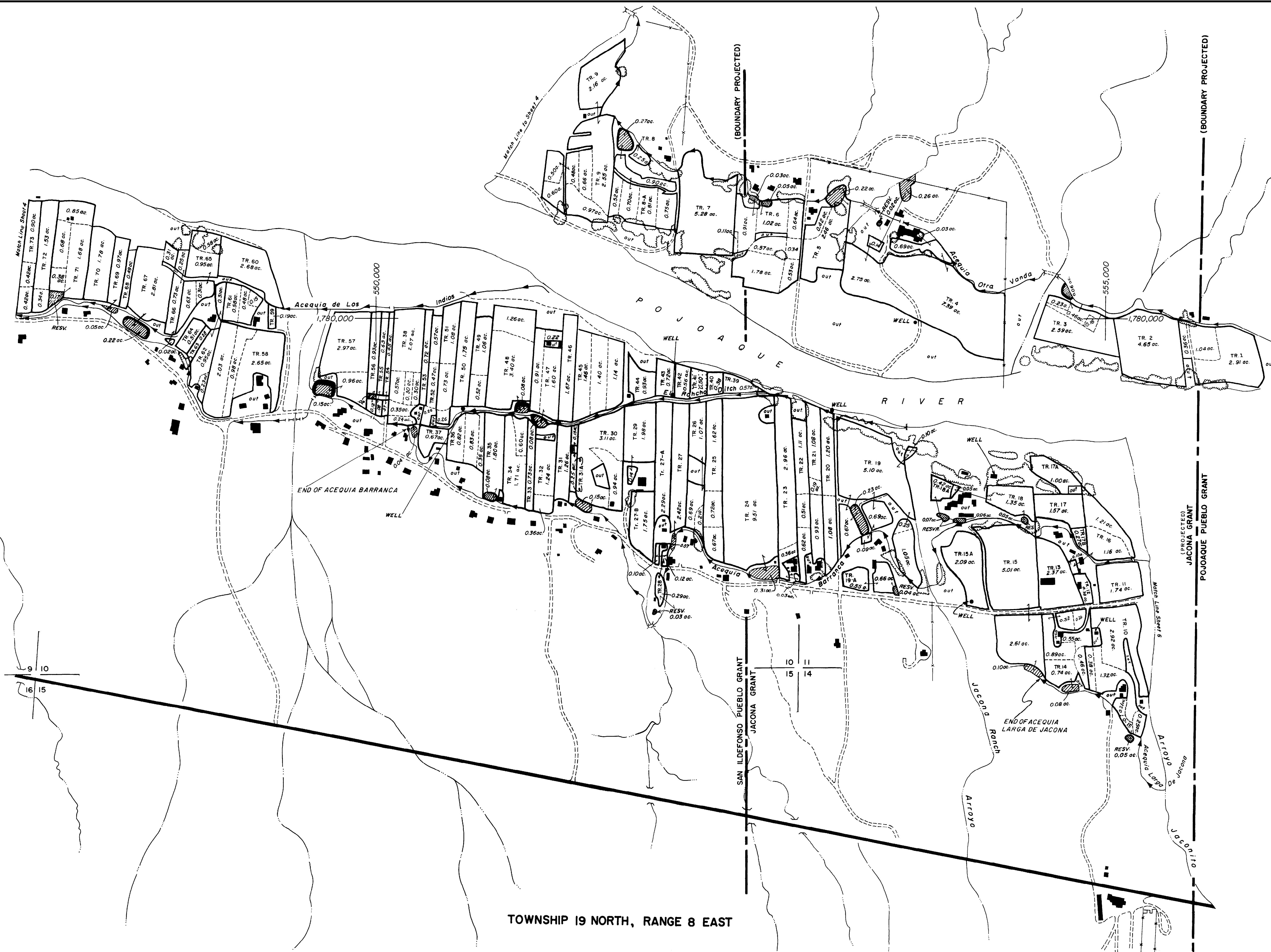


Legend

-  Irrigated Tract Boundary
-  No Right Tract Boundary
-  Pond



TOWNSHIP 19 NORTH, RANGE 8 EAST

STEREOCOMPILATION OF PLANIMETRY FROM PHOTOS RGD 5-58, 5-57

STATE OF NEW MEXICO
OFFICE OF THE STATE ENGINEER
Tom Blaine, P.E., State Engineer

UPPER RIO GRANDE
HYDROGRAPHIC SURVEY
NAMBE - POJOAQUE - TESUQUE 1964 - 2017
Final Judgment and Decree

ENGINEER SURVEYOR STEREOCOMPILATION TRACED BY APPROVED	F. R. ALLEN E. C. COOPER J. L. THOMAS M. H. BOYCE	SCALE 1" = 300' SHEET NO. 5
--	--	--------------------------------